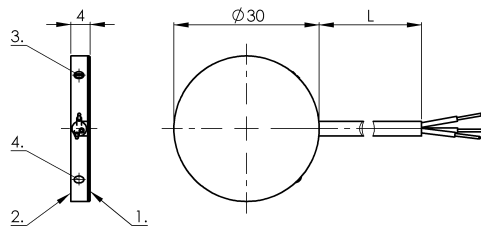
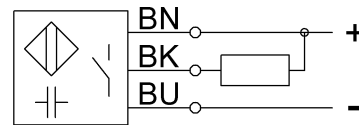


SK1-15-30/4-NBS-VA/PTFE

CS003E



Wiring Diagram



1) Sensing surface 2) Housing 3) Potentiometer 4) LED function indicator



Electrical connection

Cable length	2 m
Conductor cross-section	0.14 mm ²
Connection type	Cable, 2.00 m, PUR
Number of conductors	3
Polarity reversal protected	yes
Short-circuit protection	yes

Electrical data

Hysteresis H max. (% of Sr)	15.0 %
MTTF (40 °C)	230 a
Operating voltage U _b	10...35 VDC
Protected against miswiring	yes
Rated insulation voltage U _i	75 V DC
Rated operating current I _e DC	300 mA
Repeat accuracy max. (% of Sr)	2.0 %
Switching frequency	100 Hz
Utilization category	DC -13
Voltage drop static max.	0.8 V

Environmental conditions

Ambient temperature	-30...70 °C
Protection type IEC 60529	IP67

Functional safety

Diagnostic coverage	0 %
Functional safety	no

General data

Approval/Conformity	CE cULus
Basic standard	IEC 60947-5-2
Sensitivity	Switching distance adjustable

Material

Housing material	Stainless steel (1.4301)
Material jacket	PUR
Material sensing surface	PTFE

Mechanical data

Dimension	Ø 30 x 4 mm
Installation	for flush mounting
Size	D30.0

Output/Interface

Switching output	NPN Normally open (NO)
------------------	------------------------

Range/Distance

Measuring range	2...15 mm
Range	2...15 mm
Rated operating distance S _n	15 mm
Ripple max. (% of U _e)	10 %
Temperature drift max. (% of Sr)	20 % [-5...55 °C]

For further information on MTTF/B10d, please refer to the MTTF / B10d Certificate.

Specification of the MTTF value and the B10d value do not represent any binding quality and/or life expectancy guarantees.