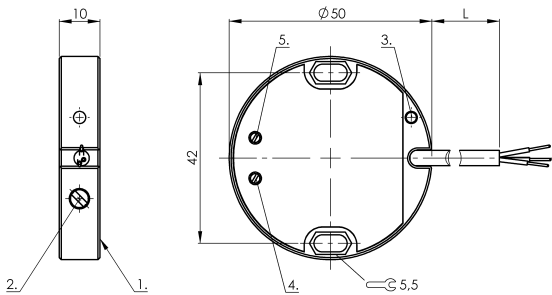
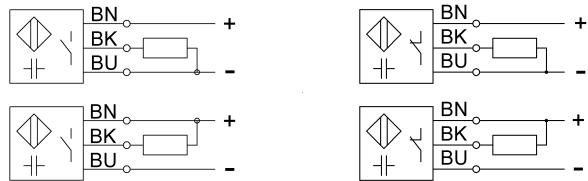


SK1-25-50/10-XBX-POM

CS003K



Wiring Diagram



1) Sensing surface 2) Potentiometer 3) LED function indicator 4) NO or NC selectable 5) PNP or NPN selectable



IND. CONT. EQ.
81U2
for use in the secondary of
a class 2 source of supply

Electrical connection

Cable length	2 m
Conductor cross-section	0.25 mm ²
Connection type	Cable, 2.00 m, PVC
Number of conductors	3
Polarity reversal protected	yes
Short-circuit protection	yes

Electrical data

MTTF (40 °C)	230 a
Operating voltage U _b	10...30 VDC
Rated insulation voltage U _i	75 V DC
Switching frequency	50 Hz
Utilization category	DC -13
Voltage drop static max.	1.5 V

Environmental conditions

Protection type IEC 60529	IP67
---------------------------	------

Functional safety

Diagnostic coverage	0 %
Functional safety	no

General data

Approval/Conformity	CE cULus
Basic standard	IEC 60947-5-2
Sensitivity	Switching distance adjustable

Material

Cover material	POM
Material cover	POM
Material jacket	PVC

Mechanical data

Dimension	undefined
-----------	-----------

Output/Interface

Switching output	PNP/NPN Normally open/ Normally closed (NO/NC)
------------------	---

Range/Distance

Measuring range	2...25 mm
Range	2...25 mm
Ripple max. (% of U _e)	10 %

For further information on MTTF/B10d, please refer to the MTTF / B10d Certificate.

Specification of the MTTF value and the B10d value do not represent any binding quality and/or life expectancy guarantees.