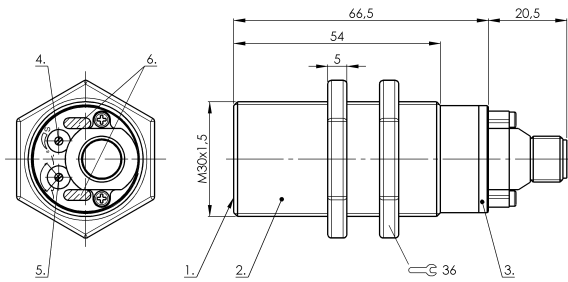
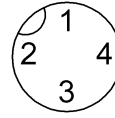


SK1-20-M30-PBX-VA/PBT-Y2

CS004T



Connector view



Wiring Diagram



1) Sensing surface 2) Housing 3) Cover 4) Potentiometer 5) NO or NC selectable 6) LED function indicator



Display/Operation

| | |
|--------------------|-----|
| Function indicator | yes |
| Power indicator | yes |

Electrical connection

| | |
|-----------------------------|----------------------------------|
| Connection | M12x1-Connector, 4-pole, A-coded |
| Polarity reversal protected | yes |
| Short-circuit protection | yes |

Electrical data

| | |
|----------------------------------|-------------|
| Hysteresis H max. (% of Sr) | 15.0 % |
| MTTF (40 °C) | 455 a |
| Operating voltage U_b | 10...35 VDC |
| Protected against miswiring | yes |
| Rated insulation voltage U_i | 75 V DC |
| Rated operating current I_e DC | 300 mA |
| Repeat accuracy max. (% of Sr) | 5.0 % |
| Switching frequency | 100 Hz |
| Utilization category | DC -13 |
| Voltage drop static max. | 1.8 V |

Environmental conditions

| | |
|---------------------------|-------------------------------|
| Ambient temperature | -30...70 °C |
| Protection type IEC 60529 | IP66 IP64 at connector output |

Functional safety

| | |
|---------------------|-----|
| Diagnostic coverage | 0 % |
| Functional safety | no |

General data

| | |
|---------------------|---------------|
| Approval/Conformity | CE cULus |
| Basic standard | IEC 60947-5-2 |
| Scope of delivery | Nut (2x) |

Material

| | |
|--------------------------|--------------------------|
| Cover material | PBT PE |
| Housing material | Stainless steel (1.4301) |
| Material cover | PBTPE |
| Material sensing surface | PBT |

Mechanical data

| | |
|-------------------|--------------------|
| Dimension | undefined |
| Installation | for flush mounting |
| Size | M30x1.5 |
| Tightening torque | 90 Nm |

Output/Interface

| | |
|------------------|---|
| Switching output | PNP Normally open/Normally closed (NO/NC) |
|------------------|---|

Range/Distance

| | |
|----------------------------------|-----------|
| Measuring range | 1...20 mm |
| Range | 1...20 mm |
| Rated operating distance S_n | 20 mm |
| Ripple max. (% of U_e) | 10 % |
| Temperature drift max. (% of Sr) | 20 % |