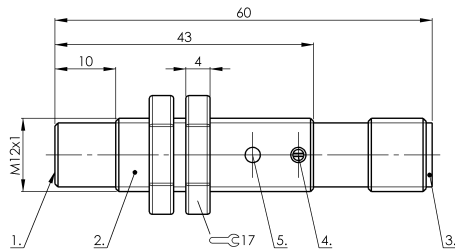
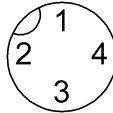


SK1-8-M12-NNBS-VA/PTFE-Y2

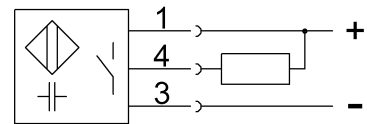
CS0064



Connector view



Wiring Diagram



1) Sensing surface 2) Housing 3) Cover 4) Potentiometer 5) LED function indicator



### Electrical connection

|                             |                                  |
|-----------------------------|----------------------------------|
| Connection                  | M12x1-Connector, 4-pole, A-coded |
| Polarity reversal protected | yes                              |
| Short-circuit protection    | yes                              |

### Electrical data

|                                  |             |
|----------------------------------|-------------|
| Hysteresis H max. (% of Sr)      | 15.0 %      |
| MTTF (40 °C)                     | 584 a       |
| Operating voltage $U_b$          | 12...35 VDC |
| Protected against miswiring      | yes         |
| Rated insulation voltage $U_i$   | 75 V DC     |
| Rated operating current $I_e$ DC | 200 mA      |
| Repeat accuracy max. (% of Sr)   | 2.0 %       |
| Switching frequency              | 100 Hz      |
| Utilization category             | DC -13      |
| Voltage drop static max.         | 1.5 V       |

### Environmental conditions

|                           |             |
|---------------------------|-------------|
| Ambient temperature       | -30...70 °C |
| Protection type IEC 60529 | IP65        |

### Functional safety

|                     |     |
|---------------------|-----|
| Diagnostic coverage | 0 % |
| Functional safety   | no  |

### General data

|                     |             |
|---------------------|-------------|
| Approval/Conformity | CE<br>cULus |
|---------------------|-------------|

Basic standard  
Scope of delivery  
Sensitivity

IEC 60947-5-2  
Nut (2x)  
Switching distance adjustable

### Material

|                          |                          |
|--------------------------|--------------------------|
| Cover material           | PA                       |
| Housing material         | Stainless steel (1.4301) |
| Material cover           | PA                       |
| Material sensing surface | PTFE                     |

### Mechanical data

|                   |           |
|-------------------|-----------|
| Dimension         | undefined |
| Installation      | non-flush |
| Size              | M12x1     |
| Tightening torque | 40 Nm     |

### Output/Interface

|                  |                        |
|------------------|------------------------|
| Switching output | NPN Normally open (NO) |
|------------------|------------------------|

### Range/Distance

|                                  |          |
|----------------------------------|----------|
| Measuring range                  | 1...8 mm |
| Range                            | 1...8 mm |
| Rated operating distance $S_n$   | 8 mm     |
| Ripple max. (% of $U_e$ )        | 10 %     |
| Temperature drift max. (% of Sr) | 15 %     |

For further information on MTTF/B10d, please refer to the MTTF / B10d Certificate.

Specification of the MTTF value and the B10d value do not represent any binding quality and/or life expectancy guarantees.