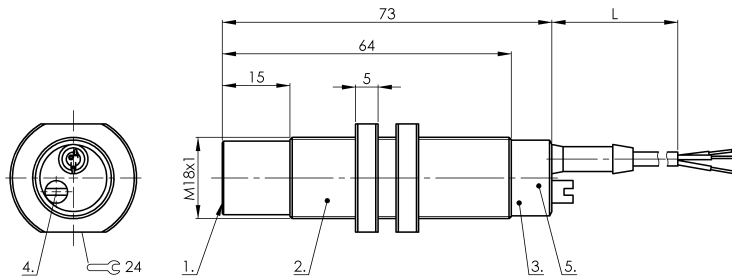
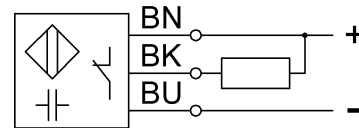


# SK1-15-M18-NNBO-CPTFE

## CS0076



### Wiring Diagram



1) Sensing surface 2) Housing 3) Cover 4) Potentiometer 5) LED function indicator



### Electrical connection

Cable length	2 m
Conductor cross-section	0.20 mm <sup>2</sup>
Connection type	Cable, 2.00 m, PTFE
Number of conductors	3
Polarity reversal protected	yes
Short-circuit protection	yes

### Electrical data

Hysteresis H max. (% of Sr)	15.0 %
MTTF (40 °C)	300 a
Operating voltage U <sub>b</sub>	10...35 VDC
Protected against miswiring	yes
Rated insulation voltage U <sub>i</sub>	75 V DC
Rated operating current I <sub>e</sub> DC	300 mA
Repeat accuracy max. (% of Sr)	2.0 %
Switching frequency	100 Hz
Utilization category	DC -13
Voltage drop static max.	1.5 V

### Environmental conditions

Ambient temperature	-30...70 °C
Protection type IEC 60529	IP67

### Functional safety

Diagnostic coverage	0 %
Functional safety	no

### General data

Approval/Conformity	CE cULus
Basic standard	IEC 60947-5-2
Scope of delivery	Nut (2x)
Sensitivity	Switching distance adjustable

### Material

Cover material	PTFE
Housing material	PTFE
Material cover	PTFE
Material jacket	PTFE
Material sensing surface	PTFE

### Mechanical data

Dimension	undefined
Installation	non-flush
Size	M18x1
Tightening torque	0.5 Nm

### Output/Interface

Switching output	NPN Normally closed (NC)
------------------	--------------------------

### Range/Distance

Measuring range	2...15 mm
Range	2...15 mm
Rated operating distance S <sub>n</sub>	15 mm
Ripple max. (% of U <sub>e</sub> )	10 %
Temperature drift max. (% of S <sub>r</sub> )	15 %